

Thinking About Climate Change: Art, Science,
and Imagination in the 21st Century Conference



25 OCTOBER
2024 9am-6:30pm

26 OCTOBER
2024 9am-6:30pm



CONFERENCE

PROGRAM

HELLO & WELCOME

We are happy you have joined us for this first of its kind conference hosted by the University of Massachusetts Boston. During the two day event there will be panel presentations by invited artists, scientists, public policy representatives and others to provide a transdisciplinary focus and discussion on climate change. Accompanying the panel discussions will be two art exhibitions, a video program from the Revolutions Per Minute Festival, student initiated events, sponsorship tables introducing the many current climate initiatives in our area and more.



“Now is the time, and UMass Boston and the Commonwealth of Massachusetts are the place to seize the opportunities and make lasting change,” Suárez-Orozco said. “The climate crisis urgently calls on us to build new pathways for sustainable development, sustainable consumption of natural resources, and an informed stewardship of the planet ensured to lead a movement to a sustainable humanity.”

OUR SPONSORS & PARTNERS

This conference explores interdisciplinary connections, shared foundations, tensions between individual and institutional structures, fostering exploration, awareness, education, and action-able solutions. It also aims to inspire scientists, researchers and artists to direct their skills to stem global warming and for sustainable development through public policy and community actions. Below are the partners and sponsors for this year's conference. Please stop by their tables to learn more about thier projects and initiatives.

MASSPIRG Students



PARTNER

Browning the Green Space



Browning the Green Space SPONSOR

UMB Alumni Association



SPONSOR

Bow Seat



PARTNER

City of Boston Environment Department



SPONSOR

Metropolitan Area Planning Council



SPONSOR



HOW TO REGISTER

This conference is free and open to the public. We do ask that you register at the website listed below to help us plan and insure a successful event for everyone involved. On the day of the conference you will need to check in and receive your name badge to access the events. We will also be emailing a conference report at the conclusion of the events to keep all attendees and participants informed.

Go to our website

<https://www.umb.edu/liberal-arts/academic-departments/art/research--impact/news/thinking-about-climate-change/>



FILL IN YOUR INFORMATION DETAILS

This way we will be able to share our conference proceedings with you at the conclusion, so please share your email!

If you require disability related accommodation, please go to ada@umb.edu



OUR SPEAKERS



GONZALO BACIGALUPE

Gonzalo Bacigalupe, EdD, MPH, is Professor of Counseling Psychology at the College of Education and Human Development, associate researcher of CreaSur at the University of Concepcion in Chile, and board director of the Family Process Institute. He has engaged in research work with colleagues in Spain, Chile, Mexico, and Australia focusing on transnational families, disaster risk reduction and community participation, and climate adaptation and activism. Presently, he is one of three co-editors of The Cambridge handbook of psychology and the planet: Environment, climate sustainability and nature. Recent papers include: Sustaining the research and the researchers during the COVID-19 pandemic: A dose of the collective method as a strategy; COVID-19 interconnectedness: Health inequity, the climate crisis, and collective trauma; Understanding community-level flooding: and more. He is a self-taught abstract artist that focuses on questions related to nature and illness, and exhibited in Greater Boston, Santiago, Chile, and South Korea. His most recent book is Nature Gone Astray: Abstract Cartographies.

Professor



JARRETT BYRNES

Dr. Jarrett Byrnes is an Associate Professor of Biology at UMass Boston. His research focuses on the causes and consequences of the diversity of life in the oceans. He has a long history working underwater in New England, having started his career diving in New Hampshire's Isles of Shoals as an undergraduate. He went on to complete a PhD at the University of California, Davis, in Population Biology, taking a detour to study the communities of organisms that foul boat hulls. He then worked in Santa Barbara, studying giant kelp forests and science crowd funding. He has been back in Boston for the last 12 years, and he has a growing research program studying the ecology of kelp beds in the Gulf of Maine. Dr. Byrnes focuses on the causes and consequences of complexity in nature. He is interested in how humans alter the diversity and interconnectedness of life on earth. Understanding how these changes alter the services that nature provides is a critical need as we watch ecosystem after ecosystem collapse. He studies these questions in the ocean because, let's face it, the sheer number and diversity of species in the oceans is astounding.

Associate Professor



RESA BLATMAN

Informed by a rich history of painting and contemporary artmaking processes, Resa's creative practice also calls on poetry, science, and nature. Using thoughtful and delicately painted moments and layering techniques, she makes work about the shifting climate that is unpredictable, yet captivating and beautiful. Beauty is a key ingredient in her toolbox, and she blends it with her reverence for and humanity's conflict with, the natural world to compose paintings and 3D installations that are both contrary and compelling. Resa Blatman is a Massachusetts-based visual artist whose work is held in public and private collections, and she exhibits at galleries and cultural institutions throughout the U.S.

Artist



DEBORAH CARRUTHERS

A Montréal native and resident, Deborah Carruthers is an inter-arts artist-composer who frequently collaborates with scientists, activists, and other artists to explore environmental issues, particularly solastalgia, the distress caused by the lived experience of environmental change. Her multimedia work often includes the composition of graphic scores and their performance; these works are often presented with her research materials, including video, notebooks, paintings, photographs, drawings, assemblages, and field recordings. These scores are usually performed by musicians, even symphonies, although Carruthers is a non-musician and uses no traditional musical notation. She sees these scores as a synthesis of her obsessive research, recording the essences of an environment and marking its transformation. Her work has been supported by Canada Council for the Arts, the Conseil des arts et des lettres du Québec (CALQ), and private foundations, and is in private/public collections in Canada (notably, the Canadian Woman Composers Archive), the USA, and Europe.

Artist

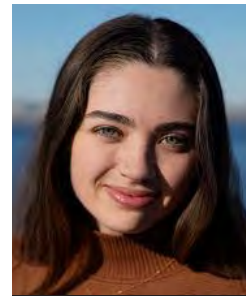
OUR SPEAKERS



BOB CHEN

Robert F. (Bob) Chen is a Professor in the School for the Environment and Director of Grand Scholarly Initiatives at the University of Massachusetts Boston. He received his AB from Harvard University in Chemistry and Physics in 1986 and his PhD in Oceanography from Scripps Institution of Oceanography in 1992. His research interests include the cycling of chromophoric dissolved organic matter (CDOM), carbon biogeochemistry in coastal systems, and the development of sensor networks in shallow water systems. He has explored dissolved organic carbon (DOC) outwelling from salt marshes, remote sensing of coastal water quality, and indicators of estuarine health. He is the Principal Investigator of the NASA PATHS Diversifying Engineering project (www.pathspartners.org), and serves on the boards of the New England Aquarium, and the Alliance for Business Leadership. He is the Chair of the Education and Engagement Committee of the Association of the Sciences for Limnology and Oceanography (ASLO), and served on its board. He has published over 80 peer-reviewed articles. He works with communities to tell stories of coastal resilience.

Professor



ERIN DOUGLAS

Erin Douglas is a climate reporter for The Boston Globe. She previously covered environment and energy issues in Texas for five years, where she was a business reporter for the Houston Chronicle and then an environment and climate reporter for The Texas Tribune. Her work focused on the impacts of climate change on Texans, including extreme heat, flooding and droughts. Her coverage of Texas' near-statewide power blackouts was recognized with an Investigative Reporters & Editors (IRE) award in 2021, and her work exploring the mental health impacts of climate disasters was recognized as part of the Tribune's Edward R. Murrow award for overall excellence in 2022. Erin studied journalism and economics at Colorado State University and her first newsroom job was interning for The Denver Post, her hometown newspaper.

Reporter



ERIN GENIA

Erin Genia, Sisseton-Wahpeton Oyate (she/her) is a multidisciplinary artist, educator and community organizer specializing in Indigenous arts and culture. Genia's work in these areas is focused on amplifying the powerful presence of Indigenous peoples on the occupied lands of America in the arts, sciences and public realm to invoke an evolution of thought and practice that is aligned with the cycles of the natural world and the potential of humanity. Genia's artistic practice merges Dakota cultural imperatives, pure expression, and exploration of materiality with the conceptual. Her work has received attention from diverse audiences, and has been exhibited nationally and internationally, at the Urbano Project in Boston, the Venice Biennale, Ars Electronica, the Museum of Northwest Art and the International Space Station. Erin has an M.S. in Art, Culture and Technology from MIT, an M.P.A. in Tribal Governance from the Evergreen State College and studied at Institute of American Indian Arts. She was awarded the 2021 Traditional Arts Apprenticeship Grant from Mass Cultural Council.

Artist



BEVERLY GOODMAN

Beverly Goodman-Tchernov blends archaeology, geology and anthropology to explore the complex ways nature and humans interact on coastlines. Her work concentrates on the causes and effects of ancient environmental events like tsunamis and floods. Her current research focuses on reconstructing and understanding the landscape and environmental changes along the Maya maritime corridors of the Yucatan, determining the tsunami history of the eastern Mediterranean and the Red Sea, characterizing tsunami deposits left behind 65 million years ago from the K-T meteorite impact, and cataloguing some of the ocean's smallest shelled creatures (foraminifera) observed by the explorers of the Pristine Seas project. Goodman believes coasts are some of the most vulnerable and relevant places on earth—we can either make responsible choices, or face enormous repercussions. She is a 2009 National Geographic Emerging Explorer.

Researcher

OUR SPEAKERS



Artist

AMY KACZUR

A Boston-based artist, producing video art for projection, installation and online, Amy Kaczur has lived and worked extensively in Boston, Cambridge, Long Beach and Los Angeles. Her work has been shown nationally and internationally. She is a member of Kingston Gallery, Boston, MA. Her latest projects are fueled by a sense of urgency related to water issues, specifically coastal flood zones and rising sea levels. She grew up outside Cleveland, with family ties working in farming, food industry, mills, and coal mines in rural Southern Ohio to the edges of Appalachia. Those roots impacted her experience of landscape and environmental issues such as pollution and climate change, and the multilayered struggles between land use and conservation. Along with examining these issues in her art practice, she works at Massachusetts Institute of Technology as the group administrator for two research labs focused on air and water pollution, climate change, and clean energy development and storage. Kaczur holds an MFA from University of California, Irvine, and a BFA from Tufts University.



Artist

MICHELLE LOUGEE

Michelle Lougee is a fiber artist, sculptor, and ceramist. Her work addresses the impact of our consumerist society on nature. She is a member of the Boston Sculptors Gallery, and her artwork has been shown at Kunstverein Teirgarten in Berlin, Convento de Santo Domingo Qorikancha in Cusco, Peru, the Peabody Essex Museum, the Art Complex Museum, and the Trustman Gallery at Simmons College. In addition, she teaches sculpture at Lesley University College of Art and Design. She resides with her family in Cambridge, MA and maintains a studio at Vernon Street Studios in Somerville, MA. She holds an MFA and a BFA from Boston University and lives in Cambridge, Massachusetts. Michelle also is a freelance illustrator whose credits include business and financial publications such as Software, Strategy and Business, and Bloomberg Wealth Manager.



Student

AMBER MULVEY

Amber Mulvey is an undergraduate student at the University of Massachusetts Boston pursuing a double major in management and environmental science with a minor in biology. She works in the Office of Campus Planning & Sustainability at her school as a sustainability assistant apprentice where she is working to create institutional change regarding sustainability on campus. She is currently working on a repurposing art project where she and students on campus are turning non-recyclable materials, collected from departments around campus, into artwork. Amber wishes to pursue a career in sustainability and conservation, and hopes to own her own business one day.



Associate Professor

ROSALYN NEGRÓN

Rosalyn Negrón is a socio-cultural/urban anthropologist in the Department of Anthropology. She is also an Affiliate Faculty at the Gastón Institute for Latino Community Development and Public Policy, and the Critical Ethnic & Community Studies graduate program, and a member of the Core Team for UMass Boston's Sustainable Solutions Lab, a research institute dedicated to understanding the disproportionate impacts of climate change on vulnerable populations and working with them to develop sustainable and equitable solutions. She received her PhD in Anthropology from the University of Florida in 2007.

OUR SPEAKERS



Associate Professor

AMIT PATEL

Amit Patel's research focuses on bottom-up approaches to improve socio-economic outcomes for the urban poor. His main research projects funded by the National Science Foundation and Melinda and Bill Gates Foundation include integration of innovative approaches from the developed world to address issues in the developing world. He has published several journal articles and book chapters on his research. He regularly teaches courses in public policy in the U.S. and conducts labs on urban poverty in India.

Professor Patel completed his PhD in public policy at George Mason University. While there, he received several awards for academic excellence including two national awards for the best dissertation in public policy.



Artist

MARK ROTH

Mark Roth is a painter and curator based in New York. His work explores rewilding, de-extinction, eco-grief, ethology, and formal painting concerns in an effort to present or discover stories resonant for the Anthropocene.

Roth emerged as a monologist in Chicago's performance art scene of the 1980's and 90's. Recently his unsanctioned augmented reality installation, Missing The Megafauna rewilded a selection of paintings at The Metropolitan Museum of Art as a meditation on the Pleistocene extinction event. Currently, his tenement apartment has been transformed into a nursery for giant sequoia seedlings – a deep time project endeavoring to cast hope far into the future.



Deputy Climate Chief

JONATHAN SCHRAG

As Deputy Climate Chief of the Commonwealth of Massachusetts, and Director of Investment for Decarbonization and Resilience, Jonathan Schrag works across technology, finance, and, regulatory policy. He focuses on how the application of information and communications technology to the power sector demands new regulatory approaches and opens new opportunities for clean energy. Jonathan's previous projects include: ETHOS (Energy Transformation Hub of the Ocean State), an initiative of the Partnership for Rhode Island, to help Rhode Island develop competitive projects for the Bipartisan Infrastructure Law; Office of the Massachusetts Attorney General, co-authored recommendations for a new regulatory framework to encourage the transition of gas utilities in Massachusetts. Jonathan's background is in clean energy technology, market design, and regulatory policy. Jonathan received an AB with honors from Harvard University.



Assistant Professor

REINMAR SEIDLER

Dr. Reinmar Seidler is a Research Assistant Professor at the University of Massachusetts Boston. Seidler studies the changing relationships of biodiversity conservation to economic development, especially in montane zones. He has published on topics ranging from disaster risk management and climate change adaptation in mountain landscapes to the institutional and policy resources required for 'green' development. As Director of Programs for ATREE-USA, he leads multidisciplinary research-action projects in the Indian East Himalaya. He holds a PhD in Environmental Biology from the University of Massachusetts Boston, where he now teaches graduate seminars on 'Conservation Biology for the Anthropocene: Science and Practice' and 'Sustainability Science: Environment, Economy, Equity', as well as an Honors College Colloquium on 'Thinking about Climate Change'.

OUR SPEAKERS



Director

ANNIS W. SENGUPTA

Annis W. Sengupta, PhD, is the Director of Arts and Culture at the Metropolitan Area Planning Council, the regional planning agency serving the people who live and work in the 101 cities and towns of metro Boston. She leads the arts and culture planning department to chart an innovative new course in the planning and community development field by stimulating a creative shift in the planning and community development culture in ways that foster policy and planning conditions that allow arts and culture to thrive. Prior to joining MAPC, Annis worked for more than a decade in the arts and culture and planning fields as a consultant and lecturer. Annis earned a master's degree in city planning and doctorate in urban and regional studies from the Massachusetts Institute of Technology and a BA in architecture from Yale University. Her research explores the connections between place, culture, and identity in the context of racial politics and the immigrant experience. Annis serves on the MASSCreative Policy Committee and is currently the Chair of the APA Arts & Planning Division.



Associate Professor

KIRSTEN SWENSON

Kirsten Swenson is Associate Professor of Art History at the University of Massachusetts, Lowell where she is the 2023-2024 Rist Institute Faculty Fellow in Sustainability. She is the author of *Irrational Judgments: Eva Hesse, Sol LeWitt, and 1960s New York* (Yale University Press, 2015) and, with Emily Eliza Scott, *Critical Landscapes: Art, Space, Politics* (University of California Press, 2015). Her current book project, on art as a form of land reclamation, has been supported by a grant from the Graham Foundation and an ACLS Kluge Fellowship at the Library of Congress. Kirsten co-curated the exhibition *Local Ecologies: Artistic Investigations of Eastern Massachusetts* that travelled to three UMass campuses in 2019 and 2020. A book based on *Local Ecologies*, co-authored with Rebecca Uchill, will be published in 2025 with Amherst College Press.



Artist

BETHANY TAYLOR

Bethany Taylor received a BFA from the University of Southern California and an MFA from the University of Colorado at Boulder. She is currently an Associate Professor of Drawing at the University of Florida, Gainesville. Her work reveals ecological and socio-political narratives embedded in everyday materials and employs drawing and textile craft as social and political activism. Her work is often engaged at the cross-sections of art and science, such as her installation, *Unraveling Ecologies*, which was recently included in the 2022 exhibition, *Unsettled Nature: Artists Reflect on the Age of Humans* at the Smithsonian National Museum of Natural History.



Assistant Professor

MAYRA VIDAL

Mayra Vidal is an Assistant Professor in Biology at UMass Boston. Mayra's work focuses on understanding how interactions between species can be influenced by the community composition and environmental factors. Climate change and human-made disturbances are major stressors to species and communities, hence, Mayra research also focuses on how species interactions are affected by and can ameliorate global environmental changes. She is particularly interested in insects, which are one of the most diverse groups of organisms on earth and are experiencing global declines. Mayra hopes to increase people's appreciation for nature, and insects in particular.

OUR SPEAKERS



NGOC-TRAN VU

(she/her) is a 1.5-generation Vietnamese multimedia visual artist and organizer whose socially engaged practice draws from her experience as a strategist, connector, and lightworker. Tran threads her collaborative and generative social practice through photography, painting, sculpture and public installation so that her art can resonate and engage audience with intentionality. Her work evokes discourse of diasporas, memories and rituals amongst themes of social justice and healing. She's currently the Director of Communications & Creative for UPROSE - a climate justice organization in Sunset Park community in Brooklyn, NY. Tran works across borders and is based in Boston's Dorchester community where she grew up. www.tranvuarts.com | [@TranVuArts](https://www.instagram.com/TranVuArts)

Artist

Image credits:

Cover, pages 8 and 9: Bethany Taylor, *Unraveling Ecologies* at the Smithsonian National Museum of Natural History, (Amazon Rainforest, Northeast United States and The Arctic) Jacquard Woven Tapestries and fiber-based drawing, 2021-2022

Page 12: (Images left to right, top to bottom) Gabriel Deerman working while installing, detail of Mark Roth's *Fir Trees Gather Around Group after "Group Gathers Around Fir Tree"* the *Boston Urban Gardeners Collection*, installation shot, Deborah Caruthers working while installing, Erin Genia's *Call to Consciousness 3*, installation shot.

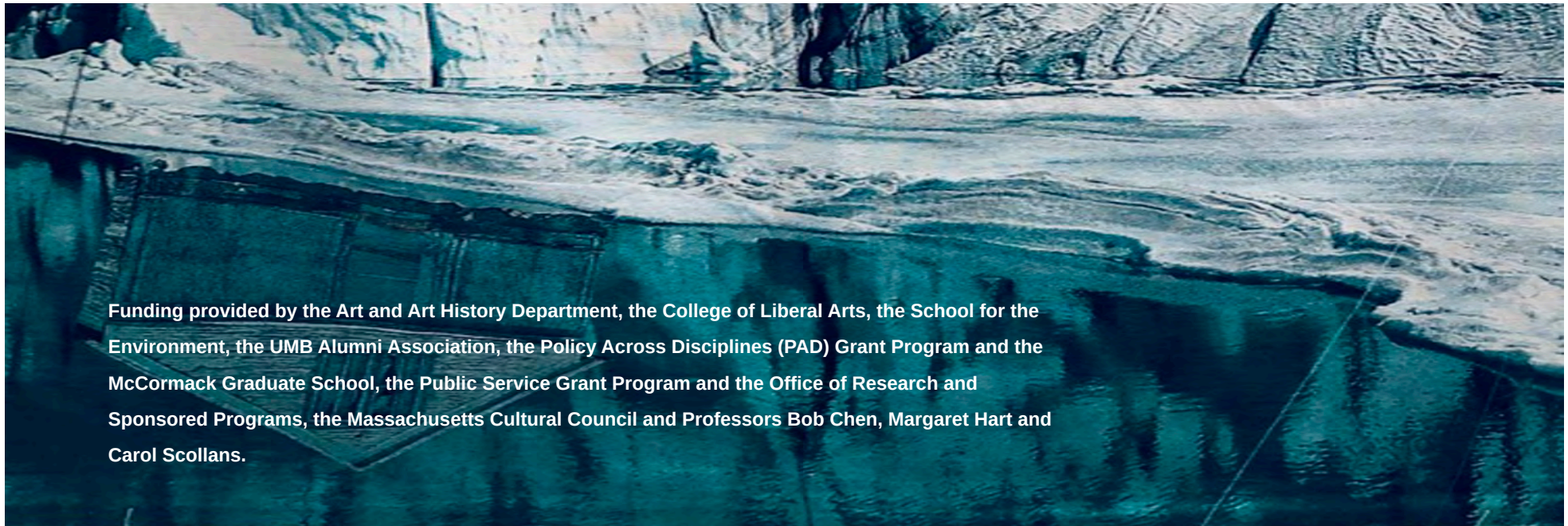
Page 13: (Images left to right, top to bottom) Sheida Soleimani, *Safekeeping*, archival pigment print, 2022; Bethany Taylor, (drawing) *breath* (drawing) near, liquid graphite, ink, soap, water and breath on paper, 2021-present; Amy Kaczur, *Messages From the Marsh* - Driftway Conservation Park, Scituate, MA, archival pigment print, 2020; Resa Blatman, *Hope Springs Eternal*, permanent public art project, oil and gold leaf on Mylar, acrylic on Lexan flower shapes, 2022

Page 14: Still, Sun Xun, *Coal Spell*, 2008 (RPM Festival Event)



THANK YOU

This conference would not have been possible without support from many individuals, departments, organizations and granting bodies. Many individuals were key to its development as well. We would like to acknowledge Lauren Brackett, Bob Chen, Aimee Bonanno, Rosalyn Negron, Reinmar Seidler, Mayra Cadorin Vidal, Amit Patel, Meagan Bailey, Carolyn Goldstein, Janna Cohen-Rosenthal, Anne Kelly-Contini, Barbara Matteau, Sam Toabe, Nancy McCormack Dermen, Wenhua Shi and a slew of others who provided feedback, connections or respite as we toiled to make this happen. The College of Liberal Arts (and Dean Pratima Prasad) and the School for the Environment have been integral to making this conference happen. Both Cat Mazza, as the Chair of the Art and Art History Department, (an early supporter) and David Areford, the incoming Chair, have also played important roles and deserve our thanks. It is our hope that all those involved and all those attending make connections that will continue the important work of climate action in ways that cross disciplines and inspire trans-disciplinary approaches to these very pressing issues.



Funding provided by the Art and Art History Department, the College of Liberal Arts, the School for the Environment, the UMB Alumni Association, the Policy Across Disciplines (PAD) Grant Program and the McCormack Graduate School, the Public Service Grant Program and the Office of Research and Sponsored Programs, the Massachusetts Cultural Council and Professors Bob Chen, Margaret Hart and Carol Scollans.

CONFERENCE DAY 01

CAMPUS CENTER BALLROOM A, B, C

9:00 AM

OPENING REMARKS

Chancellor Suárez-Orozco, Vice Chancellor Joseph B. Berger, Dean of CLA Pratima Prasad, and Dean Carol Thornber of the School for the Environment

12:30 PM ✓

Crossing Borders

Reinmar Siedler (Chair), Deborah Carruthers, Mark Roth, Erin Douglas, Amit Patel

9:30 AM ✓

Coming out of the Silos Towards Action

Bob Chen (Chair), Jarrett Byrnes, Beverly Goodman, Amy Kaczur, Michelle Lougee, and Jonathon Schrag

ALL DAY ✓

Sponsor and Info Tables

MassPIRGstudent, Browning the Green Space, UMB Alumni, Sustainable Solutions Lab, UMB Sustainability Office

11:30 AM

LUNCH

Grab a bite and visit the sponsor tables and pop-up exhibitions

2:30 PM ✓

Sustainability Tour UMB

Meet your tour guide outside of the Ballroom. Tour will last approximately 1 hour.

ALL DAY

REVOLUTIONS PER MINUTE FESTIVAL AND POP-UP EXHIBITIONS

RPM screening all day long in room U03-3540 and Pop-Up Exhibitions in Ballroom C.

4:30 PM

GROSSMANN GALLERY RECEPTION

Reception 4:00-5:30pm
Walter Grossmann Memorial Gallery
5th floor of the Joseph P. Healey Library

CONFERENCE DAY 02

CAMPUS CENTER BALLROOM A, B, C

9:00 AM

OPENING REMARKS

Chair of the Art and Art History Department David Areford and Professor Bob Chen

9:30 AM



Making it Real

Mayra Vidal (Chair), Resa Blatman, Amber Mulvey, Kirsten Swenson, and Bethany Taylor

11:30 AM

LUNCH

Grab a bite and visit the sponsor tables and pop-up exhibitions

ALL DAY

REVOLUTIONS PER MINUTE FESTIVAL AND POP-UP EXHIBITIONS

RPM screening all day long in room U03-3540 and Pop-Up Exhibitions in Ballroom C.

12:30 PM



Climate Justice

Rosalyn Negron (Chair), Gonzalo Bacigalupe, Erin Genia, Ngoc-Tran Vu, Annis W. Sengupta

ALL DAY



Sponsor and Info Tables

MassPIRGstudent, Browning the Green Space, UMB Alumni, Sustainable Solutions Lab, UMB Sustainability Office

2:30 PM



Sustainability Tour UMB

Meet your tour guide outside of the Ballroom. Tour will last approximately 1 hour.

5:00 PM

UNIVERSITY HALL GALLERY RECEPTION

Reception 5:00 - 7:00pm
University Hall Gallery
1st floor of University Hall room 1220

ADDITIONAL EVENTS



This exhibition in the Walter Grossmann Memorial Gallery features the work of the Endpoint Collective (Deborah Carruthers, Gabriel Deerman, Margaret Hart, and Mark Roth) and invited artist Erin Genia. The works include original paintings, photographs, and mixed media artworks created directly from the artists' interaction with archival materials and research related to the local environment of the University.

Each artist included has a history of working with historical records and research materials as part of their artistic practice. Reproductions of the original archival resources are included in the vitrines when possible, alongside material displaying the artists' processes in the creation of the new art works. The intent of the works are to spur discussion of climate and social justice issues, as well as highlighting the value of these archival records. The exhibition is guest-curated by Carol Scollans, Senior Lecturer III, of the Art and Art History Department.

ARTISTS AND THE ARCHIVE

July 29 - January 17, 2025/ Reception: October 25, 2024, 4:00 - 5:30 pm

Walter Grossmann Memorial Gallery

5th floor of the Joseph P. Healey Library

July and August hours M-F 7:30 am to 5:00 pm

September to December M-Th 7:30 am to 10:00 pm, F 7:30 am to 6:00 pm

January hours M-F 7:30 am to 5:00 pm



ADDITIONAL EVENTS



Nurture: Empathy for the Earth is curated by Gallery Director Sam Toabe.

This group exhibition presents emotive artworks that face the current climate crisis with vulnerability, conviction, and care. The artists are educators, activists, and researchers who call for awareness and truth even when the realities are stark and at times tragic. Some are foragers and storytellers, and one, Sheida Soleimani, is a licensed wildlife rehabilitator who cares for sick and wounded animals. In the face of resignation and dismay, this complex group of artists utilize their artistic practice to call for empathy, direct action, and hope.

Artists include:

Resa Blatman, Erin Genia, Amy Kaczur, Michelle Lougee, Andrew Mowbray, Sheida Soleimani, Bethany Taylor, Nancy Valladeras, and Christopher Volpe

NURTURE: EMPATHY FOR THE EARTH

September 3 - December 14, 2024/Reception: October 26, 5:00 - 7:00 pm

Public Reception: 10.26.24 from 5-7pm with a special spoken word performance by Helina Almonte at 6:00pm

University Hall Gallery
1st floor of University Hall room 1220

For more information, email us at: UHGallery@umb.edu or call us at 617.287.5707



ADDITIONAL EVENTS



RECYCLE REPRINT REPEAT POP-UP EXHIBITION

An Experimental Green Printmaking Lab at UMass Boston lead by Nancy McCormack Demren

This summer students from within and outside of the Art and Art History Department participated in and experimented with new green processes in printmaking. Printmaking traditionally implements the use of many highly toxic and dangerous chemicals all of which can pose risks for the user and require various channels for safe disposal. In this lab we stripped down the process, removing all of the chemicals, and experimented with alternative processes such as collograph with repurposed materials, Tetra-Pak intaglio printing, and soy wax soft ground etching. An exhibition of the students' work as well as information on the processes and demos will be on display at the conference.

The work will be on view all day October 25th and 26th in Ballroom C of the Campus Center and in the UHall Crit Space in October.

SUSTAINABILITY UMB TOUR

Tours of the UMB campus are offered to share with participants the University's unique sustainability initiatives. Please meet outside the entrance to the Campus Center Ballroom at 2:30 pm on Friday and Saturday. The tour will last an hour, so please plan accordingly.

**October 25th and 26th, 2:30pm
Outside the entrance to the CC Ballroom**



BOW SEAT EXHIBITION

A Pop-Up exhibition of works from previous Oceans Awareness contests.

Bow Seat provides an innovative space for teens to connect, create, and communicate for our blue planet. Working at the intersection of ocean science and arts education, our award-winning programming emphasizes creative thinking and making in exploring the natural world. Our flagship educational initiative, the Ocean Awareness Contest, is the world's largest environmental youth program for the creative arts.

The work will be on view all day October 25th and 26th in Ballroom C of the Campus Center.

RECYCLED LAB WASTE EXHIBITION

This pop-up exhibition features artworks created from collected lab waste materials. UMB student, Amber Mulvey, spearheaded this project and is also one of the participating artists, as well as a panel presenter.

The work will be on view all day October 25th and 26th in Ballroom C of the Campus Center.



REVOLUTIONS PER MINUTE FESTIVAL SCREENING

A video program curated by Professor Wenhua Shi from UMass Boston, Art and Art History Department

As we confront unprecedented ecological challenges, the art of moving images plays a crucial role in fostering a more informed and motivated global community. RPM Festival, Art and Art History Department of UMB, and the Goethe Institut Boston co-present a compelling two-part artistic film series focused on Water and Climate. In an era marked by climate change, these experimental short films offer a unique perspective for addressing our environmental crisis. Rather than merely depicting the harsh realities of environmental degradation, this series engages audiences on an emotional level, presenting both the urgent need for action and the hopeful possibilities for a sustainable future.

The Revolutions Per Minute festival is an annual festival celebrating cutting edge experimental media art that expands our experience of the world, including short-form poetic, personal, experimental film & video, essay documentary, animation, sound art, media installation and audiovisual performance. Born in 2013 at Colgate University, RPM relocated to Boston in 2018. This year's festival runs from September 25th to 30th and will include media showcases at Boston City Hall, Museum of Fine Arts, Brattle Theater, UMass-Boston, Harvard University and Goethe Institute.

Screening all day both October 25th and 26th, U03-3540

SPOKEN WORD PERFORMANCE

Originally performed for WGBH's Outspoken Saturdays in June 2023, Helina Almonte's original poem "Fantastic Planet" paints a vivid picture of the climate change crisis' haunting roots in colonialism. Almonte uses color, wordplay, and historical connotation to communicate the severity of this issue, implicating both the audience and herself as contributors to the killing of the earth as a result of industrialization, imperialism, and overconsumption.

Performace on October 26th, 6:00pm UH Gallery

ORGANIZERS

In alignment with the UMB mission, the Thinking About Climate Change: Art, Science, and Imagination in the 21st Century conference is planned for October 25th and 26th of 2024. The conference is designed as a collaboration between the arts, humanities, and sciences to develop an interdisciplinary understanding of climate change and find ways to address the challenges. This event highlights UMB faculty research, as well as that of invited outside participants. In the planned presentations the sciences and arts will come together to powerfully express and communicate ideas that are often inaccessible to the citizenry and to influence policymakers to

advance a climate justice agenda. The social justice framework of this conference echoes that of the UMB mission and engages diverse community partners. This conference explores interdisciplinary connections, shared foundations, tensions between individual relationships and institutional structures, with a focus on fostering exploration, awareness, education, and actionable solutions. It also aims to inspire scientists, researchers and artists to direct their passion and skills towards meaningful efforts, both individual and collaborative, to stem global heating and for sustainable development through public policy and community actions



DR. MARGARET HART

Professor of Art in the Art and Art History Department

Margaret Hart (1967, Dubuque, IA, United States) is an artist creating work in the Posthuman era. She is a mixed media artist, although photography is usually a starting point, through which she addresses larger critical issues investigating climate, gender, technology and personal narrative.

Her work can be found in many public and private collections in the United States. Hart received her BFA from the University of Iowa and her MFA from the University of Colorado, Boulder. She also holds a PhD in creative practice from Plymouth University in the UK and the Transart Institute. She currently resides in Boston, Massachusetts.



CAROL SCOLLANS

Senior Lecturer of Art History in the Art and Art History Department

In my 30+ years of study, independent curatorial work, and institutional instruction, I have been focused on the American landscape tradition from the 19th into the 21st centuries. My focus has been on identifying principal figures in painting and photography media who have explored the wonders and the impending degradation of America's natural resources. My interests have led me to believe that it is imperative to advance the climate agenda including interdisciplinary and transdisciplinary study incorporating scientific data with the humanities and visual arts for more engaging scholarship and to extend political, social, and cultural outreach.

Thinking About Climate Change: Art, Science and Imagination in the 21st Century

25-26 OCTOBER, 2024

CONTACT US



PHONE

+00 617 287 5731



EMAIL

margaret.hart@umb.edu



ADDRESS

100 Morrissey Blvd., Boston, MA 02125