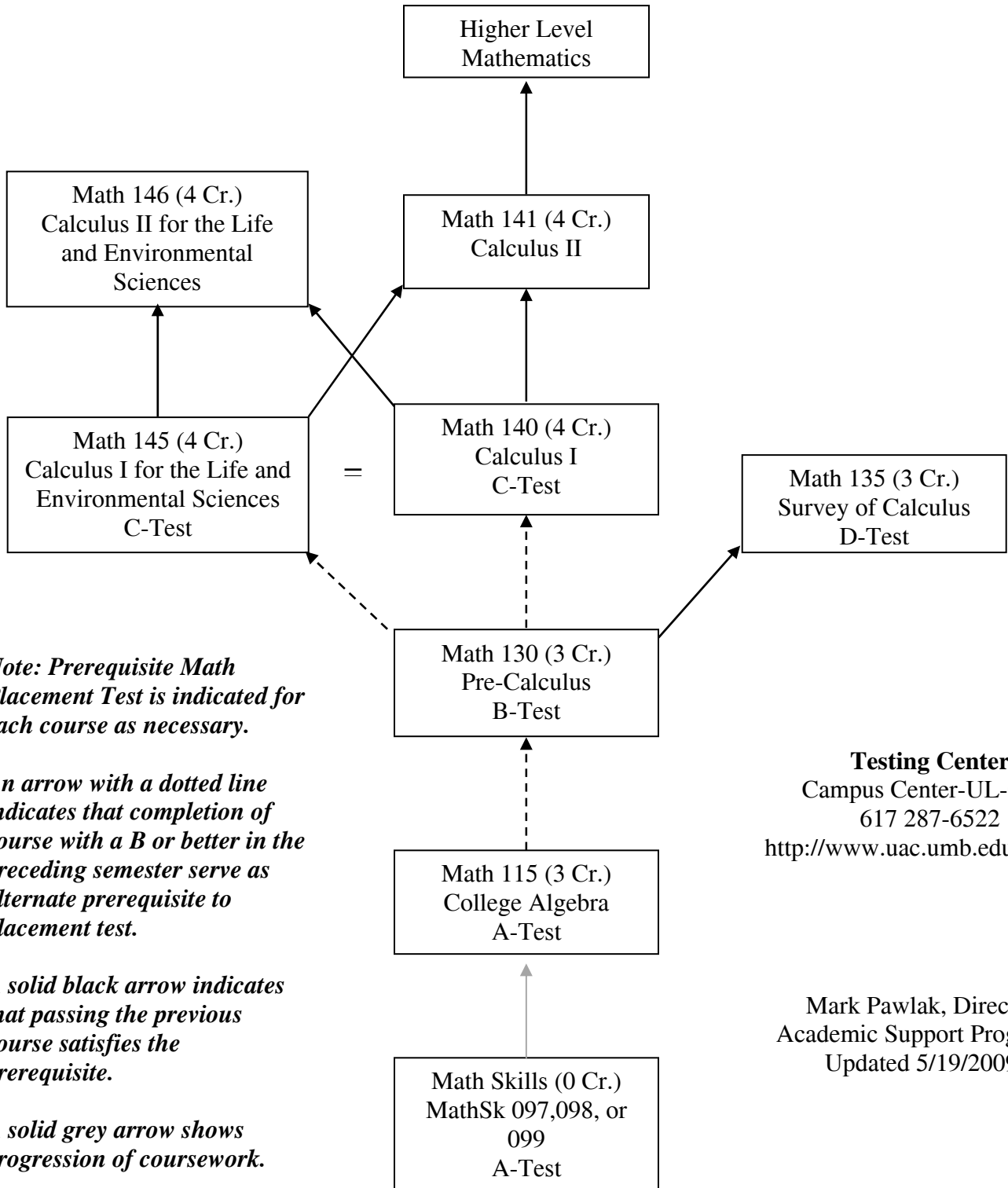


Mathematics Curriculum Pathways for College of Science and Mathematics



Note: Prerequisite Math Placement Test is indicated for each course as necessary.

An arrow with a dotted line indicates that completion of course with a B or better in the preceding semester serve as alternate prerequisite to placement test.

A solid black arrow indicates that passing the previous course satisfies the prerequisite.

A solid grey arrow shows progression of coursework.

Testing Center
 Campus Center-UL-0320
 617 287-6522
<http://www.uac.umb.edu/testing/>

Mark Pawlak, Director
 Academic Support Programs
 Updated 5/19/2009